

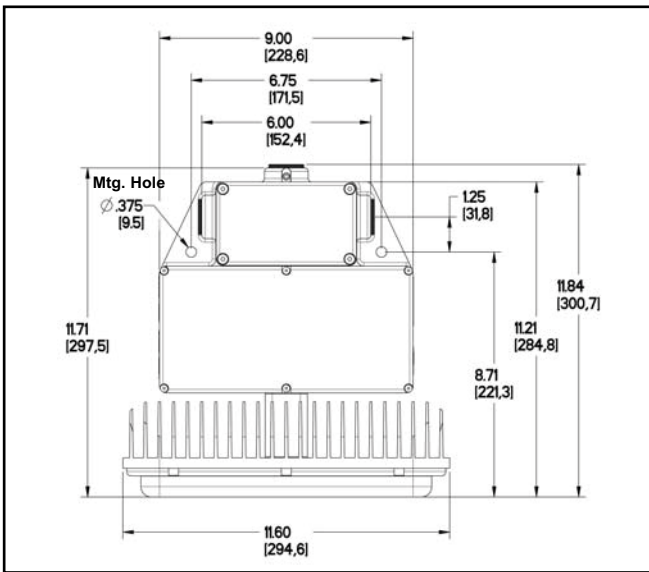


SafeSite® Series Hazardous Location LED Lighting



Patents Pending

SafeSite® Series LED White Downlight



Dimensions in Inches [mm]

Features & Benefits:

- ▷ Class I, Div 2, Groups A, B, C, D hazardous environments T4A rated
- ▷ Class II, Div 2, Groups F, G hazardous environments T3B rated
- ▷ Certified to UL844 / NEMA 4X / UL1598 / UL1598A / CSA 22.2
- ▷ IP66 rated
- ▷ Low power consumption
- ▷ Instant on/off response
- ▷ Weather/corrosion resistant lamp assembly and housing
- ▷ Universal input (120-277 VAC), 50/60 Hz
- ▷ Resistant to shock (IEC 68-2-27) and vibration (FAA 150/5345-46C)
- ▷ 5 year warranty
- ▷ 70% lumen maintenance over 60,000 operating hours

Order Codes:

Class 1, Div 2 & Class II, Div 2 - 150 Watt Equivalent	
HZC-02-150-1111-201	SafeSite 150 - 180 Degree
HZC-02-150-1111-301	SafeSite 150 - 360 Degree
Class 1, Div 2 & Class II, Div 2 - 250 Watt Equivalent	
HZC-02-250-1111-201	SafeSite 250 - 180 Degree
HZC-02-250-1111-301	SafeSite 250 - 360 Degree

Application:

P&R Tech introduces the new state of the art fixture for hazardous location lighting. Its rugged solid state design creates a new era where failed lamps and expensive relamping costs become a thing of the past. This light incorporates both cutting edge LED technology along with proprietary optics to achieve area lighting comparable with other traditional light sources. By focusing the light where it is needed, the SafeSite Series is the most efficient light source available for hazardous area lighting applications. Whether your application is in a refinery, oil platform, chemical plant or any other Class I, Division 2 / Class II, Div 2 application, this fixture offers improved performance across the board.

Mechanical Information:

Container Dimensions: 15" X 16" X 10"
381mm x 407mm x 254mm

Container Weight: 19 lbs (8.2 kg)

Electrical specifications:

Operating Voltage: 120-277 VAC, 50/60 Hz

Power Consumption 100 W

Operating Temp: -40°F to +133°F (-40°C to +55°C)

Harmonics: IEC 6100-3-2

Surge / Lightning Protection: 1 kV line to line
2 kV line to ground

THD: < 20 %

Power Factor: > 0.9

Material:

Body: Grey epoxy powder coat aluminum

Lens: SLX polycarbonate with UV stabilizer and enhanced abrasion resistance

Heat sink: Clear anodized aluminum

Accessories (hardware): Stainless steel

Photometric Information:

CRI (typ): 70

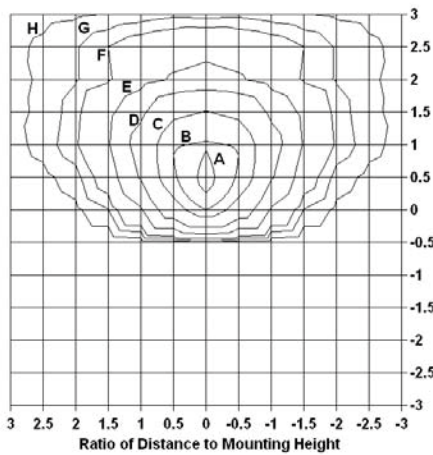
CCT: 4500-7000K

Quick fact -

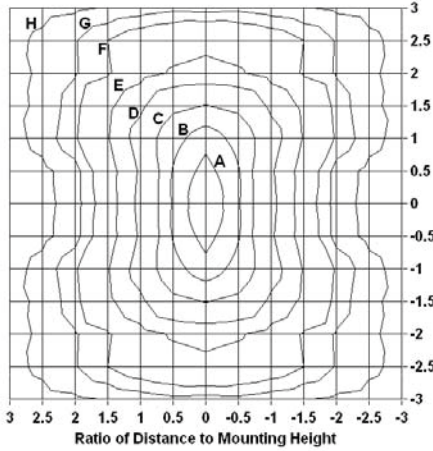
The energy savings per year that is generated for a typical plant retro-fitting 1,000 SafeSite 250 units in place of 250W HPS = \$164,000!

Light Measurement Data

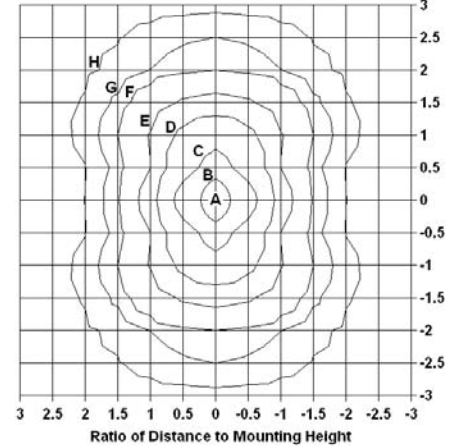
180 Degree Pattern



Back to Back 360 Degree Pattern



360 Degree Pattern



Each box is one mounting height.

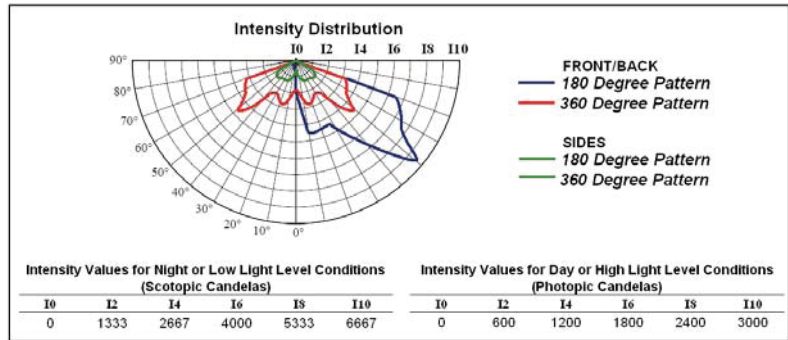
150 Watt Equivalent Fixtures

Illuminance Values for Night or Low Light Level Conditions (Scotopic Footcandles)

Mounting Height (ft)	A	B	C	D	E	F	G	H
4	136.80	91.20	72.96	45.60	27.36	13.68	9.12	4.56
8	34.20	22.80	18.24	11.40	6.84	3.42	2.28	1.14
12	15.20	10.13	8.11	5.07	3.04	1.52	1.01	0.51
16	8.55	5.70	4.56	2.85	1.71	0.86	0.57	0.29
20	5.47	3.65	2.92	1.82	1.09	0.55	0.36	0.18
25	3.50	2.33	1.87	1.17	0.70	0.35	0.23	0.12
30	2.43	1.62	1.30	0.81	0.49	0.24	0.16	0.08
35	1.79	1.19	0.95	0.60	0.36	0.18	0.12	0.06

Illuminance Values for Day or High Light Level Conditions (Photopic Footcandles)

Mounting Height (ft)	A	B	C	D	E	F	G	H
4	60.00	40.00	32.00	20.00	12.00	6.00	4.00	2.00
8	15.00	10.00	8.00	5.00	3.00	1.50	1.00	0.50
12	6.87	4.44	3.56	2.22	1.33	0.67	0.44	0.22
16	3.75	2.50	2.00	1.25	0.75	0.38	0.25	0.13
20	2.40	1.60	1.28	0.80	0.48	0.24	0.16	0.08
25	1.54	1.02	0.82	0.51	0.31	0.15	0.10	0.05
30	1.07	0.71	0.57	0.36	0.21	0.11	0.07	0.04
35	0.78	0.52	0.42	0.26	0.16	0.08	0.05	0.03



8,300 Total Lumens for Night or Low Light Level Conditions (scotopic)

3,640 Total Lumens for Day or High Light Level Conditions (photopic)

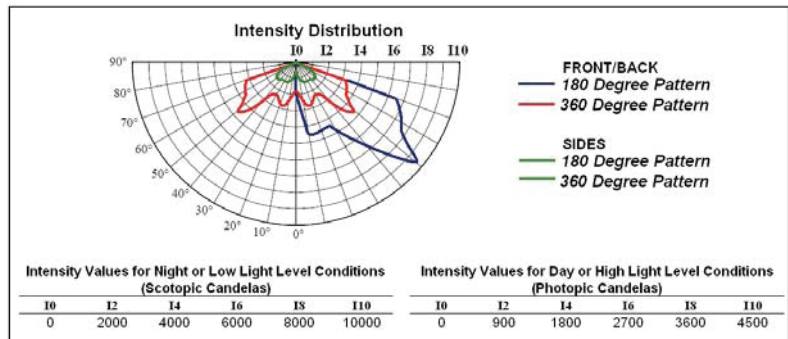
250 Watt Equivalent Fixtures

Illuminance Values for Night or Low Light Level Conditions (Scotopic Footcandles)

Mounting Height (ft)	A	B	C	D	E	F	G	H
4	205.20	136.80	109.44	68.40	41.04	20.52	13.68	6.84
8	51.30	34.20	27.36	17.10	10.26	5.13	3.42	1.71
12	22.80	15.20	12.16	7.60	4.56	2.28	1.52	0.76
16	12.83	8.55	6.84	4.28	2.57	1.28	0.86	0.43
20	8.21	5.47	4.38	2.74	1.64	0.82	0.55	0.27
25	5.25	3.50	2.80	1.75	1.05	0.53	0.35	0.18
30	3.65	2.43	1.95	1.22	0.73	0.36	0.24	0.12
35	2.68	1.79	1.43	0.89	0.54	0.27	0.18	0.09

Illuminance Values for Day or High Light Level Conditions (Photopic Footcandles)

Mounting Height (ft)	A	B	C	D	E	F	G	H
4	90.00	60.00	48.00	30.00	18.00	9.00	6.00	3.00
8	22.50	15.00	12.00	7.50	4.50	2.25	1.50	0.75
12	10.00	6.67	5.33	3.33	2.00	1.00	0.67	0.33
16	5.63	3.75	3.00	1.88	1.13	0.56	0.38	0.19
20	3.60	2.40	1.92	1.20	0.72	0.36	0.24	0.12
25	2.30	1.54	1.23	0.77	0.46	0.23	0.15	0.08
30	1.60	1.07	0.85	0.53	0.32	0.16	0.11	0.05
35	1.18	0.78	0.63	0.39	0.24	0.12	0.08	0.04



12,500 Total Lumens for Night or Low Light Level Conditions (scotopic)

5,500 Total Lumens for Day or High Light Level Conditions (photopic)

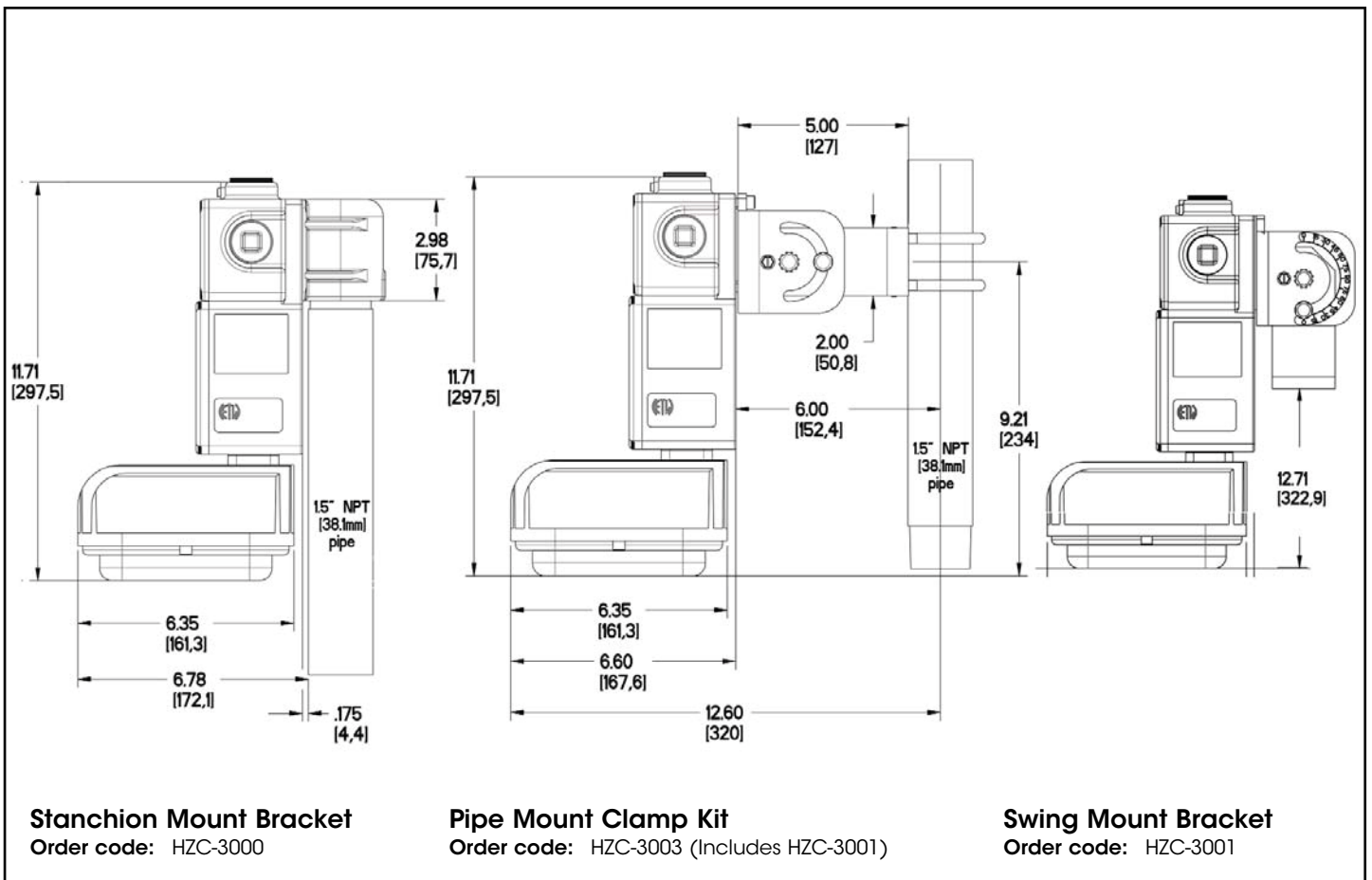
Stanchion Mount Bracket

Pipe Mount Clamp Kit

180° Adjustable Swing Mount Bracket



SafeSite® Mounting Brackets — Single Units



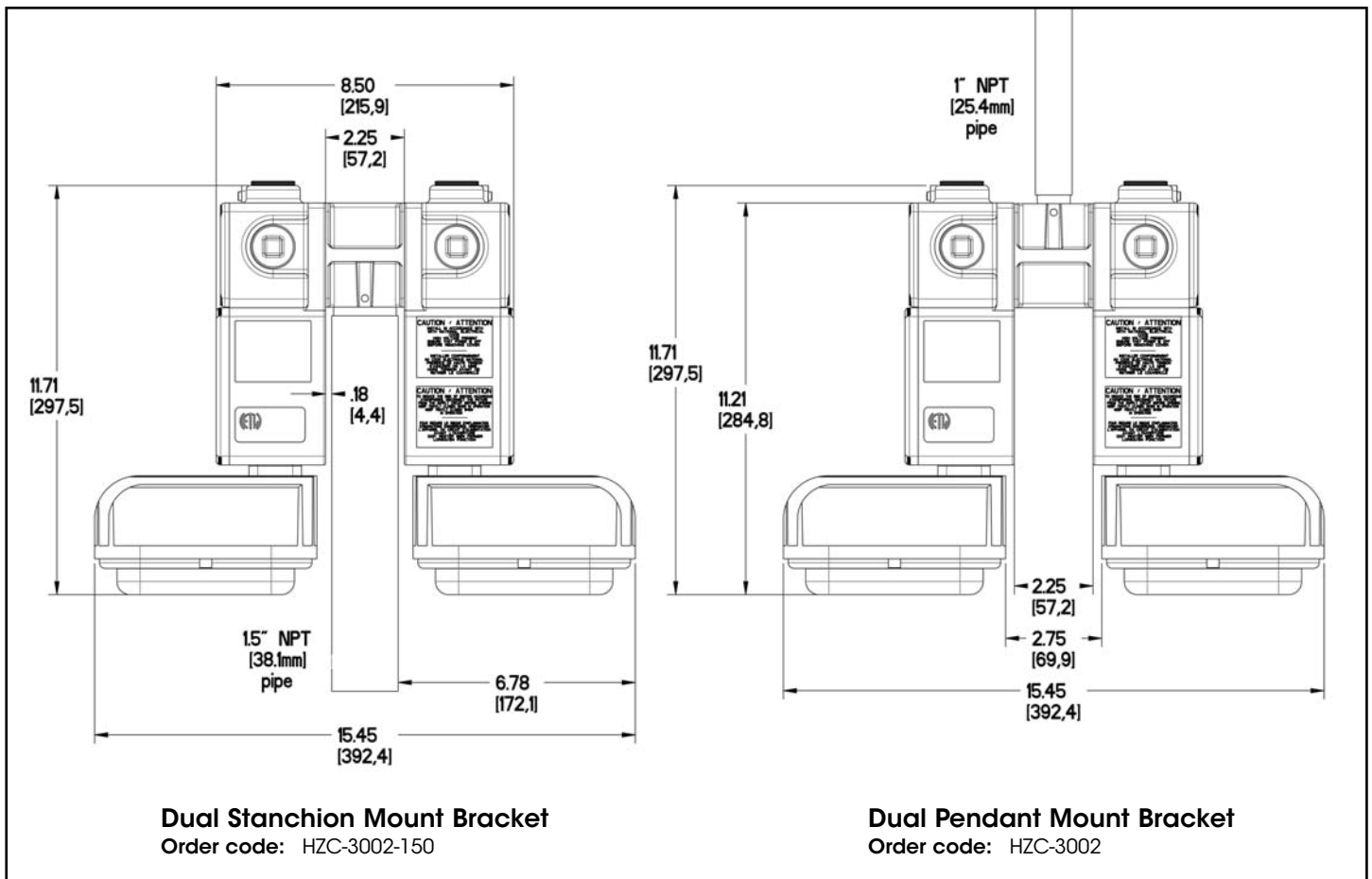
Dimensions in Inches [mm]

Dual Stanchion Mount Bracket



Dual Pendant Mount Bracket

SafeSite® Mounting Brackets — Dual Units



Dimensions in Inches [mm]