



Certifications:

Class I , Div 2, Groups A, B, C, D hazardous environments T4A rated

ATEX certified, equipment group II (surface industries), category 3 (Zone 2), T4 rated

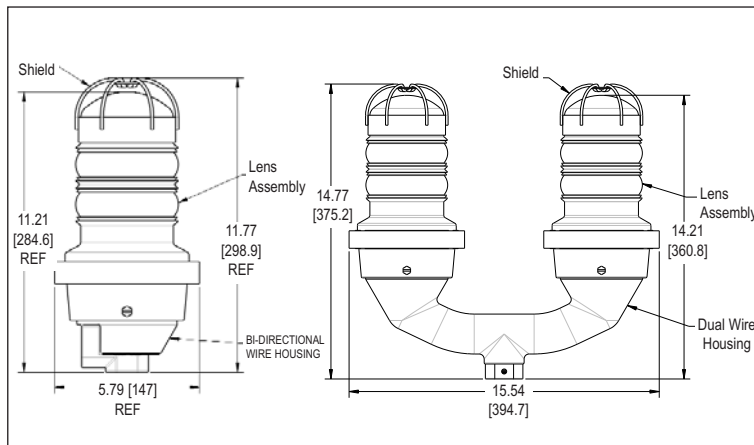
FAA AC NO: 150/5345-43F

Canadian Aviation Regulation CAR 621.9 (Transport Canada)

ETL Listed in compliance with UL1598 and UL844 for use in Class I, Div 2 hazardous locations

US Patent # 6,425,678

L810 Red LED Obstruction Lights



Dimensions in Inches [mm]

Features & Benefits:

- ▷ Class I , Div 2, Groups A, B, C, D hazardous environments T4 rated
- ▷ ATEX certified, equipment group II (surface industries), category 3 (Zone 2), T4 rated
- ▷ FAA AC No. 150/5345-43F
- ▷ Compliant to: ICAO (Annex 14 - Fourth Edition, July 2004), DGAC Mexico
- ▷ IP65 / IP66 / NEMA 4X rated
- ▷ Uses 90% less energy than an incandescent
- ▷ Weather/corrosion resistant lamp assembly and housing
- ▷ Resistant to shock and vibration
- ▷ Available as a single or dual unit
- ▷ Unique optically designed lens to enhance LED operation and provide 360° visibility
- ▷ Flash or steady burn
- ▷ Will withstand wind in excess of 150 mph (240 kph), salt fog
- ▷ 5 year performance warranty

Application:

LED Based L810 Red Obstruction light certified to meet both the rigorous FAA requirements for red LED obstruction lights and Class I, Division 2 for hazardous area lighting locations. It is available in 120VAC or 230VAC versions and can be ordered as single or dual units.

Single Units

Order codes:

- 860-2R01-001 Class I, Div 2 120 VAC
- 860-2R02-001 Class I, Div 2 230 VAC
- 860-9R01-001 ATEX 120 VAC
- 860-9R02-001 ATEX 230 VAC

Container Dimensions: 16" X 9" X 8"
406mm x 229mm x 203mm

Container Weight: 7.14 lbs (3.24 kg)

Dual Units

Order codes:

- 860-2R01-002 Class I, Div 2 120 VAC
- 860-2R02-002 Class I, Div 2 230 VAC
- 860-9R01-002 ATEX 120 VAC
- 860-9R02-002 ATEX 230 VAC

Container Dimensions: 22" X 17" X 9"
559mm x 432mm x 229mm

Container Weight: 16.06 lbs (7.28 kg)

All Units

Volt Amps: 44 (120 VAC Units)
67 (230 VAC Units)

Input Power: 14.5 watts (120 VAC Units)
16.0 watts (230 VAC Units)

Operating Temp: -67°F to +131°F (-55°C to +55°C)

Mounting: Threaded 1" NPT and 3/4" NPT bottom hub for mounting

Material: Cast aluminum housing and stainless steel hardware