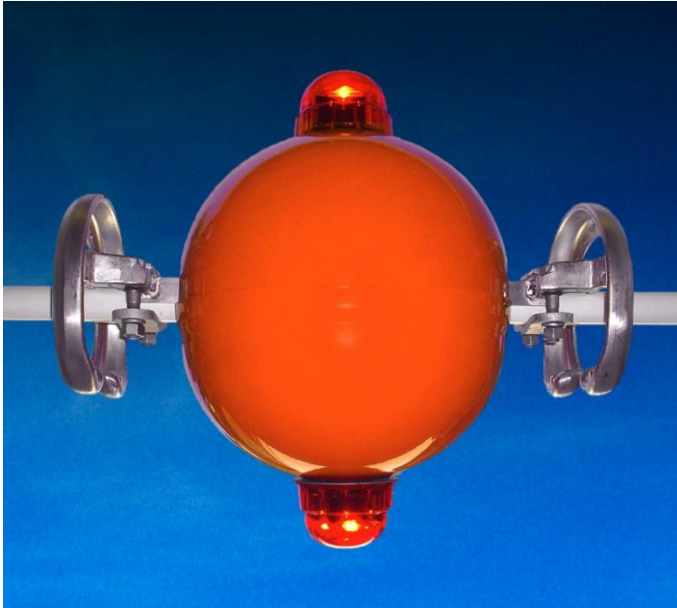


## NEW!!

# SpanLite Self Illuminated Light



- Exceeds FAA Advisory Requirements
- Revolutionary Design. Emits 32.5 candela
- Self Illuminates off the live line
- Rugged and Reliable Operation
- New LED lights insure long life
- Only 21 inches long, weighs 26 lbs
- Patent Pending
- Requires 50 Amps (2,000 amps max)
- Orange Spherical marker marks the line for day time, LED for night
- Mark river or canyon crossings or light remote towers
- Can eliminate costly solar tower lights

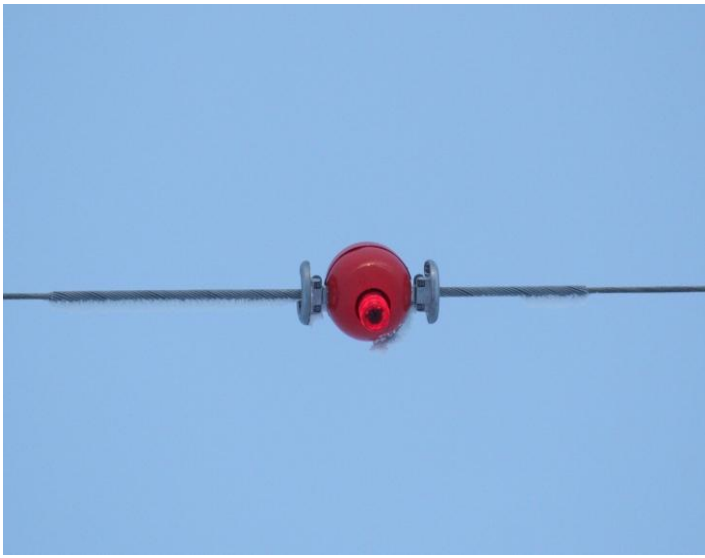
P & R Technologies is proud to introduce a revolutionary self illuminated catenary light. The new SpanLite meets FAA and exceeds both FAA & ICAO lighting standards by emitting 32.5 candela light output out of 2 lights. When installed directly to the live conductor that carries at least 50 Amps (minimum) to 2,000 Amps (maximum) the solid state LED obstruction light will glow 24/7 to light/mark the line or light remote towers.

## How it Works

For decades, utilities have looked for spherical orange markers to mark the lines during the day and fragile neon lamps to light the lines for night traffic. The SpanLite new patent pending technology makes lighting remote towers, catenary river crossings, low hanging wires, or near airports much more reliable, less expensive and long lasting than previous attempts. SpanLite's simple, but rugged construction means the SpanLite only requires 21 inches of line to work. Each SpanLite is housed in an orange 12" inch aluminum spherical housing that marks the line during day time. The SpanLite picks up enough energy to power LED obstruction light 24/7 by using a special transformer and solid state regulator.



## Exceeds FAA and ICAO Standards



Each SpanLite meets FAA and exceeds ICAO standards by emitting 32.5 candela light in a steady red color. Other LED lights are available in blue, amber or green for special applications. The SpanLite can be made to flash, too! Other options are using the SpanLite technology and incorporating it into our Spanguard 24" or 36" inch orange power line markers to offer the first real day/night power line marker saving many utilities time and money.

## Installation

The SpanLite requires only 50 Amps to energize the LED obstruction light 24/7, so can be used in many more distribution line applications. The conductor goes directly through the center of the 12" inch sphere, and through our transformer. Two rugged clamps at each end of the sphere provide a tight hold on the conductor to prevent slipping or movement of the SpanLite. We recommend customers install a additional set of armor rods over the conductor to insure no line damage occurs. Simply install the top half of the sphere back on and the SpanLite is installed permanently. The SpanLite can be installed on conductors up to 2 1/4 inch diameter.

