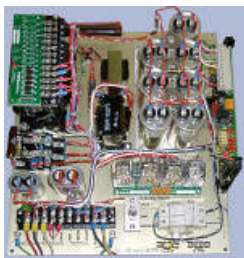




P.O. Box 554, Portland, OR; 97207  
 503-292-8682 (Phone) 800-722-8078 503-292-8697 (Fax)  
 info@pr-tech.com sales@pr-tech.com

**Obstruction Lights**



**D-1LVS Controller**  
**Single FAA Type L-865**  
**White Strobe Beacon**

<b>Specifications</b>	
Lightning Protection	MOVs, Isolation Transformer & Surge Protector
Alarms	Form "C," Power Fail, Photocell, Red Beacon Fail, Strobe Fail & Sidelight Fail
Service-Related Features	Modular Construction, Training Classes, Service Contracts, Installation & 24/7 Technical Support
Other Equipment Needed	Cable or Conduit Lighting Kit
Warranty Period	2 Years Limited
Meets FAA	AC-150/5345-43E
Applications	Tower, Chimneys, Cooling Towers, Bridges, Buildings, Wind Turbines & Custom Structures
Enclosure	Stainless Steel
Dimensions (HxWxD)	18" x 16" x 9.25" (45.72 x 40.64 x 23.50 cm)
Mounting Dimensions (HxW)	18.75" x 12" (47.62 x 30.48 cm)
Weight	45 lbs. (20.45 kg)
Cable (Diameter/Weight Per 100 ft.)	0.625" ± 10% / 24 lbs. (15.875 mm ± 10% / 10.9 kg)

**OPTIONS**

Integrated alarm monitoring system complete with real time on-screen diagnostic capability. Combine one of our fully integrated monitoring systems with our monitoring software to take full advantage of the features that it has to offer.

**Features**

- User Friendly Software
- Remote Diagnostic Control
- Remote Light Operation Control
- Trigger Voltage Reading
- Temperature Reading
- AC Power Reading
- Capacitors Voltage Reading
- Alarm Reporting to a Pager
- Photocell Monitoring
- Real-time Clock Photocell Backup
- Light Failure Monitoring
- Integrated NOTAM Form
- Monitor All Light Systems
- Interfaces with Card Access Systems
- Strobes are Fully Integrated

503-292-8682 (Phone) info@pr-tech.com 800-722-8078 sales@pr-tech.com 503-292-8697 (Fax)  
 Copyright © 2003 P&R Technologies www.pr-tech.com